

TEMPORIZED TACTILE PUSHBUTTON PT EMP ELX / PT SUP ELX

DINUY

- CHARACTERISTICS**
- Power supply: **230Vac 50Hz +/-10%**
 - Switching capacity: **16A cosφ = 1**
 - Incandescent and 230V~ halogen lamps: **3.000W**
 - VLT halogen lamps (ferromagnetic transformer): **2.400W**
 - VLT halogen lamps (L or C type electronic transformer): **3.000W**
 - Fluorescent lamps: **1.300W (130μF)**
 - Compact fluorescent lamps (CFL): **18x7W, 12x11W, 10x15W, 10x20W, 10x23W**
 - Motors or fans: **200VA**
 - Admits contactor
 - Time: between **30 seconds** and **12 minutes**
 - Unlimited number of pushbuttons without led and 5 lighted pushbuttons max.
can be associated to **PT EMP ELX** (flush universal box mounting) / **PT SUP ELX** (surface mounting)
 - Resettable during the cycle
 - Lockscrews to avoid its theft



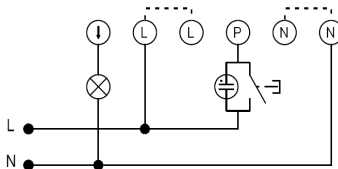
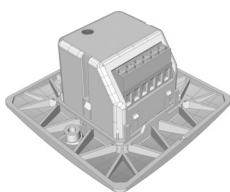
INSTALLATION

Follow next steps for a correct installation:

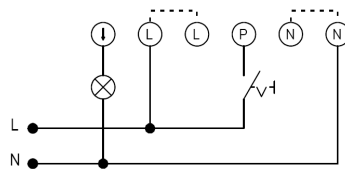
1.-Connection

Install it according to the wiring diagram that appears in the device.

It is only necessary to install the pushbutton which appears in this diagram below when it is going to install additional pushbuttons (with or without led).



With additional conventional pushbutton



With additional switch for permanent tuning-on

2.-Time setting

Adjust the connection time turning the potentiometer behind the back of the device.

3.-Mounting

Mount the device using the two lockscrews.

4.-Operation

Approximating the finger toward the circular zone that encircle the led the pushbutton is activated.