

TEMPORIZED TACTILE PUSHBUTTON PT EMP 00X / PT SUP 00X

DINUY

CHARACTERISTICS

- Power supply: **230Vac 50Hz +/-10%**
- Incandescent and 230V~ halogen lamps: **500W**
- VLT halogen lamps (ferromagnetic transformer):**400W**
- VLT halogen lamps (type L electronic transformer): **500W**
- Motors or fans: **100VA**
- **Not admitted fluorescent lamps, compact fluorescent lamps (CFL) or type C electronic transformers.**
- Time:**between 30 seconds and 12 minutes**
- Unlimited number of pushbuttons without led and maximum 5 lighted pushbuttons can be associated to **PT EMP 00X** (flush universal box mounting) / **PT SUP 00X** (surface mounting).
- Resettable during the cycle.
- Lockscrews to avoid its theft.



INSTALLATION

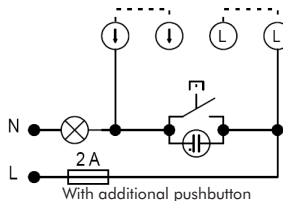
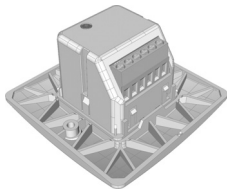
Follow next steps for a correct installation:

1.-Connection

Install it according to the wiring diagram wich appears in the device.

It is only necessary to install the pushbutton wich appears in this diagram below when it is going to install additional pushbuttons (with or without led)

When the device is connected to the power supply it will be produced an automatic connection for the time adjusted on the device.



ATTENTION:

This device does not permit to disconnect physically the lamps from the power supply. In order to obtain this function it is necessary to insert a breaker device associated to the timer.

External protection according to the current standard.

2.-Time setting

Adjust the time connection turning the potentiometer behind the back of the device.

3.-Mounting

Mount the device using the two lockscrews.

4.-Operation

Approximating the finger toward the circular zone that encircle the led the pushbutton is activated.